



Hazel Road Playground Consultation

Consultation feedback

- Brent parks service held a public consultation in relation to Hazel Road open space in 2023. Feedback highlighted the playground as the area the majority wanted to see prioritised.

People wanted:

- More Inclusivity
- More sensory play
- Wider age range

As a result of the consultation funding of £25,000.00 was secured through a community grant enabling improvements to be made to the site.

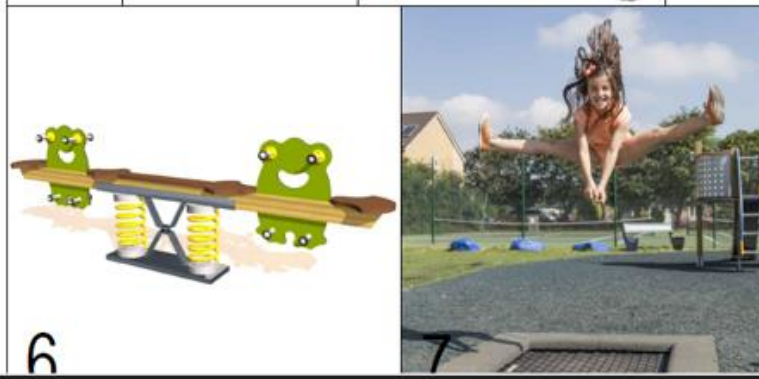
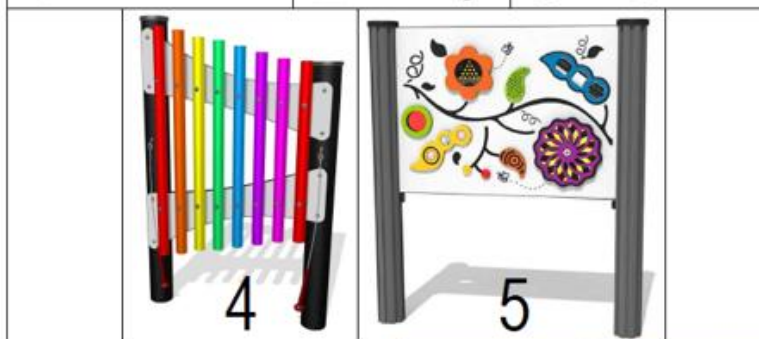
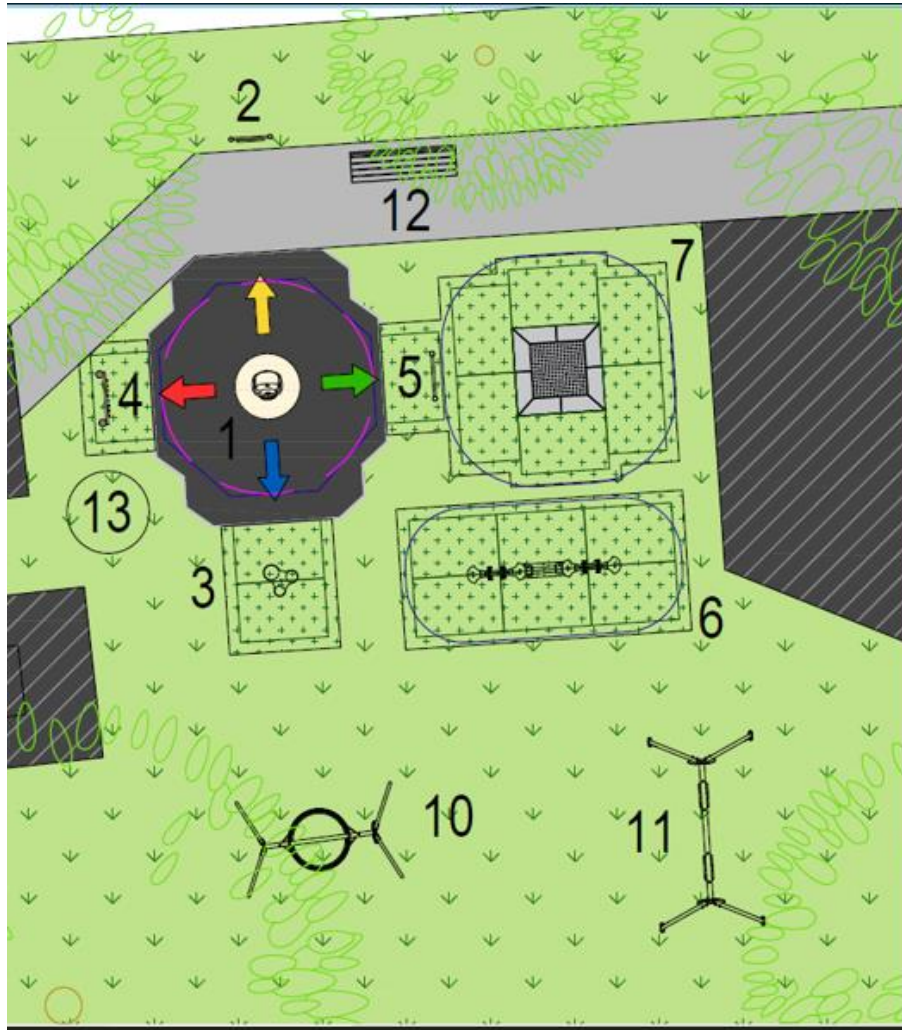
In line with the available funding the following options have been put forward.

Area of Improvement

- The areas below were highlighted as most in need of improvement.



Option 1 Proposal



ITEMS LIST

Play Equipment

1. Spinning Bowl	Ref: J2411A
2. Fahr Wobbly Mirror Panel (600x1200mm) including 2No. posts	Ref: UKFWAVY
3. Fahr Eco Bongo Tree with Post	Ref: UKFECOBOTREE-WP
4. Fahr Eco Chimes (570x1080mm) including 2No. Posts	Ref: UKFECOC4-WP
5. Fahr Sensory Play Panel (800x595mm) including 2No. Posts	Ref: UKFSENPS
6. Tree Frogs Springer	Ref: J685A
7. EuroTramp Trampoline 1.5m x 1.5m (jumping area 1m x 1m)	Ref: R34-ETP-000A

*Includes added drainage to help reduce standing water under Trampoline

Existing Play Equipment

- 8. Cradle Swing
- 9. Slide
- 10. Poo Swing
- 11. Flat Swing

Existing Ancillaries

- 12. Bench
- 13. Picnic Table

Safety Surfacing

Area to be surfaced with 24m² Grassmat. This includes:

- Supply of 16No. Grassmats (24m²)
- Supply of Ground Stabilising Mesh for Grassmat (1x30m Roll)
- Delivery of Grassmat & Ground Stabilising Mesh
- Installation of 24m² Grassmat

Area to be surfaced with 16m² Welpour, all at a critical fall height of 1.2m & below.

Colour Breakdown:

- 14m² = Black Welpour
- 1m² = Cream Welpour Wearpad
- 0.25m² = Yellow Welpour Graphic
- 0.25m² = Red Welpour Graphic
- 0.25m² = Blue Welpour Graphic
- 0.25m² = Green Welpour Graphic

Removals

- Dig Removal of Springer & Metal Climbing Unit
- Remove & Dispose of 16m² Existing Welpour
- Remove & Dispose of 6m² Existing Grassmat

Landscaping

Supply & Lay 34m² Topsoil & Turf underneath new grassmat areas (watering not included)

Miscellaneous

- Preliminaries included
- Post Installation Inspection included
- Added Delivery Surcharge of Proludic, partnership & landscaping elements due to location of site (not included in the overall delivery)

Drainage for underneath the R34-ETP-000A Trampoline has been included, this is to reduce the amount of standing water but does not ensure that standing water will not occur.

Proposed Grassmat Safer surfacing is based on a fully established grass site (including a minimum of 150mm of good quality soil and turf).

Proposed Grassmat will follow the natural contours of the land.

Welpour guarantees are only valid when laid onto appropriate subbase with pre-cast concrete edging (PCC) to the manufacturer's specification. Welpour guarantees will not be applicable when welpour is laid onto any existing surface this includes (but not limited to) existing welpour, paving slabs,

Offering

- Introduction of Spinning bowl (Inclusive Item)
- Introduction of Trampoline (Inclusive Item)
- Introduction of Bongos or similar (Inclusive item)
- Introduction of wobbly mirror (Inclusive item)
- Introduction of Eco Chimes (Inclusive Item)
- Introduction of frog springer
- Supply of safety surfacing for relevant new items (Wet pour /rubber matting)
- Removal of existing springer

Option 2



Offering

- Removal of existing Item and damaged safety surfacing
- Introduction of Discovery vehicle (Inclusive Item)
- Introduction of Role play and panel unit (Inclusive Item):
 - ✓ Ball maze
 - ✓ Role play shop
 - ✓ 'tell the time'
 - ✓ Telescope
 - ✓ Rope seat
- Removal of mound slide / reallocation of springer
- Sufficient safety surfacing for new items

Points to note

- Both options include funding of removal of old material from site.
- Both options include required safety surfacing for new installations as per regulations.
- Option 2 includes removal of the slide and mound, due to limited funding this would be returned to amenity grass until funding towards a new item became available.