



Highways and Infrastructure Services

Projects Development

Delegated Approval Report

Report for Head of Healthy Streets and Parking

Wards Affected:

Kilburn

Queen's Park

Kensal Green

Title: Bike Hangar Programme 2021/2022

Approved by:

Title	Name	Date
Author	Padideh Asgari	19/01/2022
Team Leader	Debbie Huckle	19/01/2022
Head of Healthy Streets and Parking	Sandor Fazekas	31/01/2022

1.0 PURPOSE OF REPORT

- 1.1 This report summarises the outcome of public consultation conducted in December 2021 for the introduction of bike hangars at six locations across three wards (Kilburn, Kensal Green and Queen's Park). They are being located in the areas with the highest demand from local residents.
- 1.2 The Head of Highways and Infrastructure considers the results of the public consultation and approves the installation of bike hangars at the locations that received sufficient support from residents and stakeholders. Alternative locations will be found for those with a negative consultation outcome.

2.0 BACKGROUND AND DEVELOPMENT

- 2.1 Brent Council is actively promoting sustainable travel and encouraging more residents to cycle and to enjoy the many benefits that cycling brings, including promoting healthier lifestyles and reducing air pollution in the borough.
- 2.2 Local authorities are expected to make appropriate provision for cycle parking to support targets to increase cycling. In order to fulfil that role effectively, the quality of cycle parking is an important component in providing cycling infrastructure.

- 2.3 Bike hangars were developed in response to a growing demand for secure on street parking particularly in areas where residents do not have access to private outdoor space. Bikes can block hallways and staircases in some properties and those left on street can be a target for cycle theft.
- 2.4 Following a successful trial in 2016 we have continued to install bike hangars when funding has been available, we currently have 56 bike hangars installed across the borough.
- 2.5 To date we have over 600 individual requests for bike hangars, some of these requests are for two or three spaces for family members. The requests originate from 15 different wards, and are predominantly from the south of the borough mainly Kilburn and Queens Park wards although we have recently seen a rise in the number of requests from residents in Kensal Green, Willesden Green, Mapesbury, Brondesbury Park, Cricklewood and Dudden Hill.

The map in **Appendix A** shows the requests for bike hangars.

- 2.6 We consulted on the six bike hanger locations listed below. All locations listed below had a positive consultation outcome.

Summary of Results:

Site Reference:	Location	Post Code	Ward	Questionnaires Sent	Questionnaires Received	Response Rate			
						%	Yes	No Opinion	
BH12	Brooksville Avenue near the junction of Salisbury Road	NW6	Queens Park	59	11	19%	6	5	0
BH 14	Harvist Road near the junction of Milman Road	NW6	Queens Park	17	2	12%	2	0	0
BH 16 & 17	Harrow Road near the junction of Wakeman Road	NW10	Queens Park	31	2	6%	1	0	1
BH23	Ancona Road near the junction of Wrottesley Road	NW10	Kensal Green	41	10	24%	6	4	0
BH 25	Lushington Road near the junction of Holland Road	NW10	Kensal Green	44	8	18%	5	3	0

Table 1 – Summary of results

3.0 CONSULTATION RESULTS

3.1 Consultation Procedure

A public consultation was carried out in December 2022. The consultation documents were posted to all affected households and businesses in the local areas within 50 metres of the proposed location of the bike hangars. They were also distributed to the local ward Councillors, interested groups and statutory authorities including the emergency services.

3.2 Consultation Results

The overall summary of the consultation shows that 36 individual responses were received, the response rate from each location varies and can be found above in table 1- summary of results. Over all the response rate is considered average or above for this type of exercise.

The table below (table 2) highlights the overall response to the Questionnaire survey in the consultation document. An example of the consultation document can be found in **Appendix B**.

Question 1	Yes	No	No opinion
Do you agree with the proposed Bike Hangar?	21	14	1
Percentage	58%	39%	3%

Table 2 – Question 1 in the questionnaire

The table below (table 3) highlights a summary of the comments received for each location with officer response and recommendation.

Table 3- Summary of Consultation Comments and Officer Response

Site Reference:	Location	Post Code	Ward	Consultation Response	Officer Response
BH12	Brooksville Avenue near the junction of Salusbury Road	NW6	Queens Park	<p>The sooner the better This will remove parking space for cars where it is already in short supply My reason: Residents already have issues finding parking on the road Proposed bike hangar storage would be a huge hassle for our life in an area that already has limited parking There is evidence of demand in this consultation pack I am formally objecting to the proposal</p> <p>Other Responses Black Disabled People's Association agreed with the proposal</p>	<p>Officers note the supportive comments. Officers note the parking pressure comments and are of the view that the bike hangars will not add substantial parking pressure to residents. Bike Hangars are 3m length and is considered as half a car park place. Officers will recommend to progress the implementation of this hangar.</p>
BH 14	Harvist Road near the junction of Milman Road	NW6	Queens Park	No Comments	<p>Officer note majority in favour of the hangar, and recommend to progress the implementation of this hangar.</p>
BH 16 & 17	Harrow Road near the junction of Wakeman Road	NW10	Queens Park	<p>Other Responses Black Disabled Peoples Association – agreed with the proposal</p>	<p>Officer note majority in favour of the hangar, and recommend to progress the implementation of this hangar.</p>

BH23	Ancona Road near the junction of Wrottesley Road	NW10	Kensal Green	<p>The car space is short as is where it is difficult to park o/s your house</p> <p>There is currently not enough parking for residents or visitors on this road. It should have done this long before as it is so much needed</p> <p>This is much needed in our area and a perfect location We support the installation of the bike hangar in Ancona Road This is an extremely welcomed proposition Limited parking already</p> <p><u>Other Responses</u> Black Disabled Peoples Association agreed with the proposal.</p>	<p>Officers note the supportive comments. Officers note the parking pressure comments and are of the view that the bike hangars will not add substantial parking pressure to residents. Bike Hangars are 3m length and is considered as half a car park place. Officers will recommend to progress the implementation of this hangar.</p>
BH 25	Lushington Road near the junction of Holland Road	NW10	Kensal Green	<p>I own a bike and at the moment I do not have a place to hang my bike at home. I support this proposal Cycling is the future, and this initiative helps pave the way forward no</p> <p><u>Other Responses</u> Black Disabled Peoples Association – agreed with the proposal</p>	<p>Officer note majority in favour of the hangar, and recommend to progress the implementation of this hangar.</p>

4.0 EQUALITIES ANALYSIS

4.1 Of the questionnaires returned, approximately 24 respondents completed the equality monitoring questionnaire. The total number varies for each question some respondents did not answer every question.

4.2 A breakdown of the equality data for all six locations is shown below

Asian Or British Asian	Black or Black British	Any other ethnic Background	White		Mixed Background	Prefer not to say
			White or White British	White other		
1	5	1	10	0	0	3

Table 4 – Responses to “What is your ethnic group?”

*

Do you consider yourself to have a disability?			Gender			Sexual Orientation			
Yes	No	Prefer not to say	Male	Female	Prefer not to say	Heterosexual	Gay	Bisexual	Other or prefer not to say or
3	19	2	11	9	2	17	1	0	5

Table 5– Responses to “Do you consider yourself to have a disability?”, “What is your gender?” and “What is your sexual orientation?”

Religion									
Agnostic	Buddhist	Christian	Hindu	Humanist	Jewish	Muslim	No Religion	Other	Prefer not to say
0	0	10	1	0	0	0	7	1	5

Table 6– Responses to “What is your religion?”

Age group						
16-24	25-34	35-44	45-54	55-64	65+	Prefer not to Say
0	1	4	2	10	5	2

Table 7 – Responses to which age group do you belong?"

4.3 Although it is a small sample, this is broadly consistent with the diversity within the wards.

4.4 Project Equalities Analysis:

Protected Characteristic	Positive	Neutral	Negative	Comments	Mitigation if required
Age		X		No reason to believe this group will be disproportionately affected	N/A
Disability		X		No reason to believe this group will be disproportionately affected	N/A
Gender reassignment		X		No reason to believe this group will be disproportionately affected	N/A
Pregnancy and maternity		X		No reason to believe this group will be disproportionately affected	N/A
Race		X		No reason to believe this group will be disproportionately affected	N/A
Religion or belief		X		No reason to believe this group will be disproportionately affected	N/A
Sex		X		No reason to believe this group will be disproportionately affected	N/A
Sexual orientation		X		No reason to believe this group will be disproportionately affected	N/A

Project Equality Analysis

4.3 The equality analysis above does not affect adversely on any of the protected groups.

5.0 FINANCIAL IMPLICATIONS

5.1 There is a total £270,000 of S106 developer funding secured for the installation of bike hangars. The cost of each Hangars procured under the Waltham Forest Framework is £3,875, which excludes consultation and project management costs which are £7,000. 40 bike Hangars have been ordered and six will now be implemented using this funding.

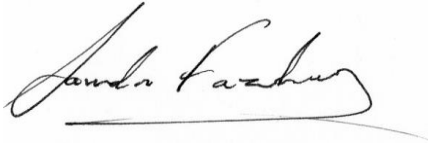
5.3 There are no additional financial implications arising for the Council.

6.0 RECOMMENDATION

6.1 The Head of Healthy Streets and Parking approves the proposal to install the six bike hangars as highlighted in table 3 above.

AGREED / REJECTED

Signed:



31st January 2022

Date:.....

Sandor Fazekas

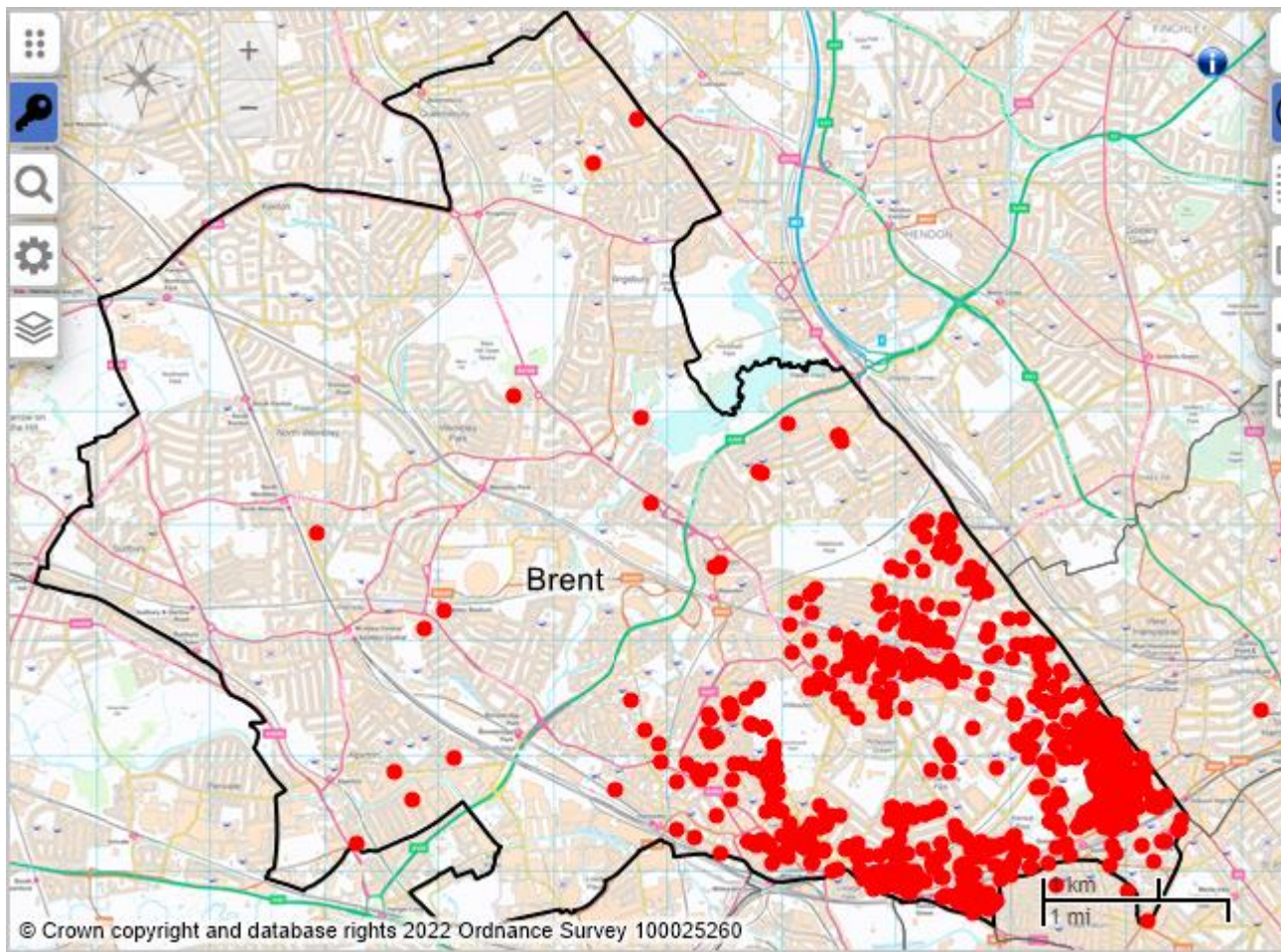
Head of Healthy Streets and Parking

7.0 APPENDICIES

Appendix A – Map of bike hangar requests

Appendix B – Consultation Document Example and Questionnaire

Appendix A- Map of Bike Hanger Requests



 Brent	Public Consultation Proposed Plympton Avenue Bike Hangar
--	--

This document outlines our proposals for the introduction of a Bike Hangar on Plympton Avenue, NW6. Please read the information in this document, then complete, and return the enclosed questionnaire - **postage is free**. Alternatively, this document is also available for completion online at <https://haveyoursay.brent.gov.uk>. Responses from within the consultation area only will be considered. The closing date for the return of the questionnaire is XXXXXXXX.

Why are we proposing this change?

Brent Council aims to improve facilities for cyclists in the borough and promote active and sustainable travel. In line with the vision set out in our Cycle Strategy 2016-2021, the Council is encouraging more residents to take up cycling, to enjoy the health benefits that this brings and to help reduce traffic congestion and improve air quality in the borough.

The Council has received requests from residents in the Kilburn ward to provide secure cycle parking in streets where they do not have access to private outdoor space. Bikes can block hallways and staircases in some properties, and those left on street can be a target for cycle theft.

Through its cycle parking programme, the Council propose to install bike hangers in areas where there is a high demand from local residents for this facility.

What is being proposed?



We are proposing to introduce a Bike Hangar on Plympton Avenue as shown on the enclosed plan. The proposed Bike Hangar would be located near the junction of Plympton Avenue and Torbay Road. The Bike Hangar will take 3m in space.

The hangar, which has the capacity to store six bicycles, will be rented to users for an annual fee.

What will happen next?

At this stage of the process, we are seeking your initial views. To give us your feedback, please complete and return the attached questionnaire using the freepost facility (or online using the link at the top of this page) by **XXXXXXXXXX 2021**.

The results of this consultation will be used to decide on whether to implement the proposals.

Sandor Fazekas, Project Development Manager, Highways and Infrastructure

Please see the back of this document for further details on how to respond to this consultation.

We are consulting residents/businesses in the area within the marked red line



Your views are important to us

<p>Only the questionnaire issued by the Council should be used to respond to this consultation and no photocopies will be considered. Alternatively, this document is also available for completion online at https://haveyoursay.brent.gov.uk, responses from within the consultation area only will be considered.</p>	<p>Please complete the enclosed questionnaire and return it in the Freepost envelope provided to:</p> <p>London Borough of Brent Highways & Infrastructure 5th Floor, Civic Centre Engineers Way Wembley, Middlesex HA9 0FJ</p>	<p>All properties within the consultation area are shown on the above plan. Local groups, Statutory Authorities, the Emergency Services and Ward Councillors are also being consulted.</p>
---	--	--

Your response is protected as required by the Data Protection Act and will not be identified.

If you would like further information, then please contact:

<p>Debbie Huckle Team Leader Safety & Travel Planning Highways & Infrastructure Service London Borough of Brent highwaysconsult@brent.gov.uk</p>	<p>Paulette Weekes Consultation Officer Project Development Highways & Infrastructure Service London Borough of Brent highwaysconsult@brent.gov.uk</p>
---	---

Translation Request

<p>We need all of our customers to be able to understand the information we provide. If you need to receive the information in your own language or in an alternative format (e.g. large print, Braille), please contact the Customer Office on 020 8937 5600</p> <p>ENGLISH</p>
<p>Indica el idioma que necesitas para recibir la información que ofrecemos. Si necesitas recibir la información en tu propio idioma o en un formato alternativo (p.e. gran tamaño, Braille), ponte en contacto con el Servicio al Cliente en el teléfono 020 8937 5600</p> <p>SPANISH</p>
<p>Indica el idioma que necesitas para recibir la información que ofrecemos. Si necesitas recibir la información en tu propio idioma o en un formato alternativo (p.e. gran tamaño, Braille), ponte en contacto con el Servicio al Cliente en el teléfono 020 8937 5600</p> <p>PORTUGUESE</p>
<p>Indica el idioma que necesitas para recibir la información que ofrecemos. Si necesitas recibir la información en tu propio idioma o en un formato alternativo (p.e. gran tamaño, Braille), ponte en contacto con el Servicio al Cliente en el teléfono 020 8937 5600</p> <p>ITALIAN</p>
<p>Indica el idioma que necesitas para recibir la información que ofrecemos. Si necesitas recibir la información en tu propio idioma o en un formato alternativo (p.e. gran tamaño, Braille), ponte en contacto con el Servicio al Cliente en el teléfono 020 8937 5600</p> <p>GERMAN</p>
<p>Indica el idioma que necesitas para recibir la información que ofrecemos. Si necesitas recibir la información en tu propio idioma o en un formato alternativo (p.e. gran tamaño, Braille), ponte en contacto con el Servicio al Cliente en el teléfono 020 8937 5600</p> <p>FRENCH</p>
<p>Indica el idioma que necesitas para recibir la información que ofrecemos. Si necesitas recibir la información en tu propio idioma o en un formato alternativo (p.e. gran tamaño, Braille), ponte en contacto con el Servicio al Cliente en el teléfono 020 8937 5600</p> <p>DUTCH</p>
<p>Indica el idioma que necesitas para recibir la información que ofrecemos. Si necesitas recibir la información en tu propio idioma o en un formato alternativo (p.e. gran tamaño, Braille), ponte en contacto con el Servicio al Cliente en el teléfono 020 8937 5600</p> <p>POLISH</p>
<p>Indica el idioma que necesitas para recibir la información que ofrecemos. Si necesitas recibir la información en tu propio idioma o en un formato alternativo (p.e. gran tamaño, Braille), ponte en contacto con el Servicio al Cliente en el teléfono 020 8937 5600</p> <p>RUSSIAN</p>
<p>Indica el idioma que necesitas para recibir la información que ofrecemos. Si necesitas recibir la información en tu propio idioma o en un formato alternativo (p.e. gran tamaño, Braille), ponte en contacto con el Servicio al Cliente en el teléfono 020 8937 5600</p> <p>CHINESE</p>
<p>Indica el idioma que necesitas para recibir la información que ofrecemos. Si necesitas recibir la información en tu propio idioma o en un formato alternativo (p.e. gran tamaño, Braille), ponte en contacto con el Servicio al Cliente en el teléfono 020 8937 5600</p> <p>INDIAN</p>
<p>Indica el idioma que necesitas para recibir la información que ofrecemos. Si necesitas recibir la información en tu propio idioma o en un formato alternativo (p.e. gran tamaño, Braille), ponte en contacto con el Servicio al Cliente en el teléfono 020 8937 5600</p> <p>ARABIC</p>
<p>Indica el idioma que necesitas para recibir la información que ofrecemos. Si necesitas recibir la información en tu propio idioma o en un formato alternativo (p.e. gran tamaño, Braille), ponte en contacto con el Servicio al Cliente en el teléfono 020 8937 5600</p> <p>VIETNAMESE</p>
<p>Indica el idioma que necesitas para recibir la información que ofrecemos. Si necesitas recibir la información en tu propio idioma o en un formato alternativo (p.e. gran tamaño, Braille), ponte en contacto con el Servicio al Cliente en el teléfono 020 8937 5600</p> <p>PORTUGUESE</p>

BH2 Pympton Avenue
December 2021



Questionnaire
Proposed Pympton Avenue
Elise Hanger

Dear Sir or Madam,

Your views are important to us - please therefore take the time to read and respond.

The information you provide will be treated confidentially and will be used solely by the London Borough of Brent.

Sending back the form

Please complete the questionnaire and return it to the FREEPOST envelope enclosed to reach us by 30/01/2022 20:01. Alternatively, post it to London Borough of Brent, Highways & Infrastructure, Civic Centre, Engleway Way, Wembley, Middlesex, HA9 9FJ.

Details on-line

This consultation document will be available on our website. Please go to <https://www.london.gov.uk/consultations/ah>. Results will be available to view on 15th of the closing date.

Only one reply per household or business will be accepted.

Sender: Farnham
Project/Development Manager
Highways and Infrastructure

If you require this document in larger print please call
0208 937 5600

Brent Making a better borough



Transport for London

Question

Do you agree with the proposed take banner?

- Yes No No Option

Comments

Privacy statement

You are providing your information to Brent Council, Highways and Infrastructure.

The Council's Data Protection Officer can be contacted via dpo@brent.gov.uk or 020 8937 1402.

Your information is collected for the purpose of analysis, as required to fulfil the council's duties under the statutory consultation process.

The information will be shared within Brent Council for consultation analysis only and used by the Highways and Infrastructure service to gain insight in to the opinions of those consulted. The information shall be retained for 7 years and shall be processed in adherence to your legal rights, including but not limited to the right to withdraw consent, right to copies of your information and right to be forgotten. You have a right to lodge a complaint with the Information Commissioner's Office (www.ico.org.uk).

Further information can be found at www.brent.gov.uk/privacy

Thank you for taking the time to complete this questionnaire.

If you require any additional information or would like further explanation

Please email Debbie Huckle at highwaysconsult@brent.gov.uk